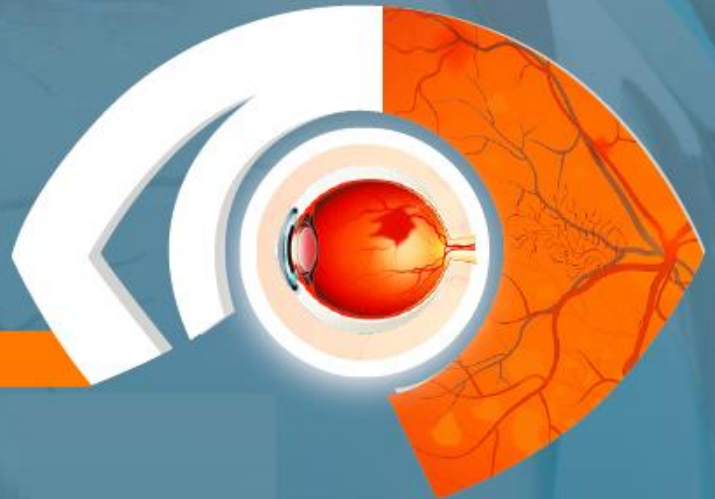


# CERTIFICATE COURSE IN EVIDENCE BASED MANAGEMENT OF DIABETIC RETINOPATHY

Cycle II (November 2016-February 2017)



## COURSE CALENDER

<b>I</b> MODULE	Epidemiology and Introduction to Diabetic Retinopathy with special reference in context to Type 1 and 2 Diabetes.	<b>20<sup>th</sup> November 2016</b>
<b>II</b> MODULE	Risk factors for Diabetic Retinopathy in Type 1 and 2 Diabetes, systemic Management and Prevention of Retinopathy.	<b>18<sup>th</sup> December 2016</b>
<b>III</b> MODULE	Ocular Management of Diabetic Retinopathy in Type 1 and Type 2 DM.	<b>22<sup>nd</sup> January 2017</b>
<b>IV</b> MODULE	Hands-on-training and Final Assessment	<b>5<sup>th</sup> / 19<sup>th</sup> February 2017<sup>*</sup></b>

*\* The two dates are for Exit Examination*